



what are you looking at?

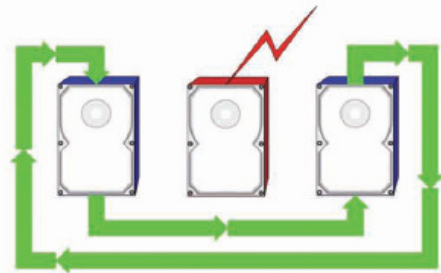
GOZONE-V2

OzoneV2 4X	OzoneV2 8X	OzoneV2 16X
<ul style="list-style-type: none"> - 4 Video Inputs & 1 Audio Input - 4 Alarm Inputs & 1 Alarm Output - Up to 100ips recording - Up to 500GB Storage 	<ul style="list-style-type: none"> - 8 Video Inputs & 1 Audio Input - 8 Alarm Inputs & 1 Alarm Output - Up to 240ips recording - Up to 1500GB Storage 	<ul style="list-style-type: none"> - 16 Video Inputs & 1 Audio Input - 16 Alarm Inputs & 1 Alarm Output - Up to 480ips recording - Up to 1500GB Storage

FEATURES

Never Fails To Record Data:

- The V2 shows the status & location information on the hard disk management menu, through which a user can locate a bad disk & replace it with a new disk.
- When the V2 encounters a bad disk it does the following:
 - Skips the bad disk & continues recording data on the next available disk in the system (8x and 16x only)
 - Displays a warning message on the screen
 - Sounds the internal buzzer
 - Sends an e-mail to the remote user



The V2 supports S.M.A.R.T to detect faulty disks, & never fails recording until all attached hard disks are inoperable (3 disk storage only available in 8x & 16x)

Never Fails To Record Data:

- The V2 plays the most recent 3 minutes of video automatically when the user presses the "Play" button on the front of the DVR or IR Remote.
- The DVR also provides various other search modes such as: "Go to First", "Go to Last", "Timeline Search", "Log Search" and "Event/Alarm Search".



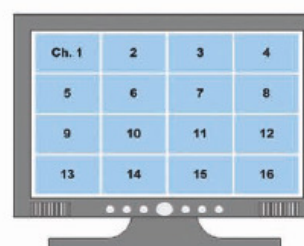
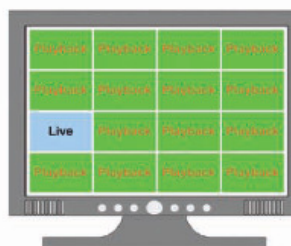
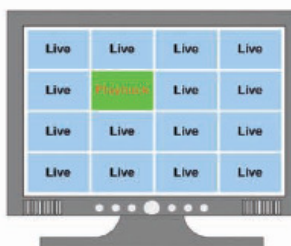
Smart Playback:

- With the Smart Playback feature users can save time by viewing only event triggered video footage. The user simply presses the "Smart" button during playback and the V2 automatically searches for the next event.



Manipulate the system as desired:

- The V2 allows users to play video from one channel while monitoring live video from the other remaining channels.
- It's also possible to monitor live video from one channel while all the other channels plays video.
- Users can also change the camera position as desired

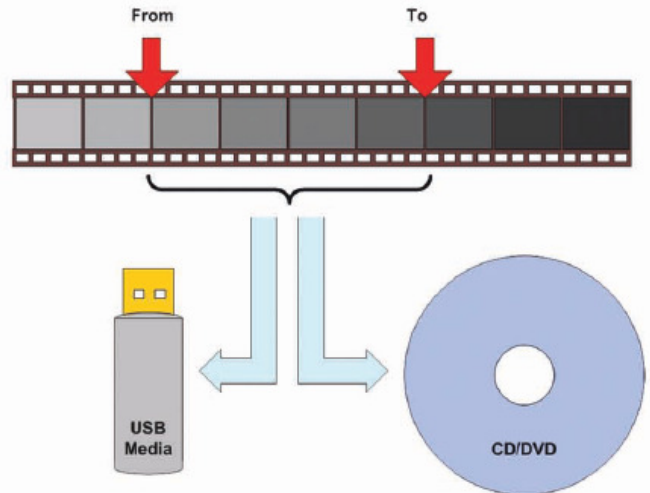


Backup during Playback:

- Backup video by defining time duration on the video playback.
- Users can define the data duration exactly and to the second.
- When playing video data the user may define the start and end time to back up.
- Users can back up data on either an internal CD or DVD or an external USB media including Flashdrives or USD Hard Drives.

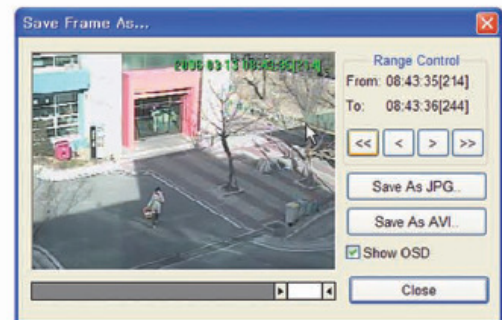
Play backup video on DVR:

- Instantly confirm the video backup result through the DVR by simply inserting the CD/DVD or USB device into the V2.



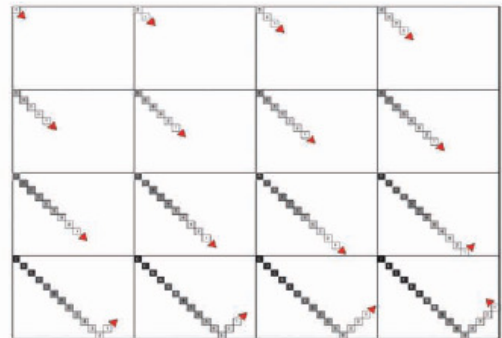
Video Playback Software:

- Option to pause, forward, rewind, save as AVI and take snapshots. This software is saved onto USB or DVD when archiving from the DVR so no other software needs to be loaded onto the PC when viewing playback.



Panorama Playback:

- Display 16 consecutive frames from a selected screen to analyze the event.
- The V2 displays 4-, 9-, or 16- consecutive frames from a selected channel on a 4-, 9-, or 16- split screen allowing the user to view a continuous image.



Remote Monitoring Software:

- View all 16 Video and Audio Channels Remotely.

Remote View Log Software:

- Search and playback all 16 video and audio channels remotely.
- Search by time / date / event / alarm.



Specifications:

	Ozone V2 4X	Ozone V2 8X	Ozone V2 16X
Video	Enhanced MPEG4 (1~2.5KB @ CIF) compression		
MD	Selectable zones out of 23 x 15 grids / 5 sensitivity		
Video In	Loop-through inputs with auto termination		
Video Out	(1) VGA	(1) VGA	(1) VGA
	(1) TV	(1) TV	(1) TV
	(1) Spot TV	(1) Spot TV	(3) Spot TV
	Event triggered image pop-up on main monitor & spot monitor(s) Auto sequencing rotation (camera selectable) on main monitor and spot monitor(s) Various display mode: 1,4,7,9,10,13,16		
Audio	G.726 compression		
	Bi-Directional audio communication		
Audio In	(1) Line-in	(1) Line-in	(1) Line-in
Audio Out	(1) Line-out	(1) Line-out	(1) Line-out
Alarm In	(4) Sensor	(8) Sensor	(16) Sensor
Alarm Out	(1) Relay	(1) Relay	(1) Relay
Alarm Action	Triggering relay output Capturing an image and sending the image out to PC Software Moving PTZ camera to a pre-defined preset Popping up event triggered channel's video on the screen		
PTZ Control	RS-485 port (64) presets / (1) preset tour group / (1) pattern Pelco-D, Pelco-P, American Dynamics (Sensormatic), GE (Kalatel), Samsung, etc.		
Internal HDD	500	500/1000/1500	500/1000/1500
DVD-RW	Yes	Yes	Yes
Live	120ips	240ips	480ips
Recording	120ips	240ips	480ips
Resolution	VGA	VGA	VGA
Search	Go to, Calendar (timeline) search, Event search (Time, Type, & Channel)		
Backup	DVD/USB/PC		
Control	Push button on the front panel / USB mouse (on 8x & 16x) / IR Remote		