



EDITION 2

Innovative Access Control and Video Products

Contents

| | |
|---|--------------|
| IP Systems | 4-5 |
| IP Cameras | 6-7 |
| Video Management System | 8-9 |
| DVRs and IP Recording | 10-11 |
| Intelligent Video Analytics | 12 |
| DVRs - Embedded | 13 |
| Analogue PTZ Cameras | 14-15 |
| Analogue Indoor Mini Domes | 16 |
| Analogue Vandal Resistant Mini Domes | 17 |
| Analogue Bullet Cameras | 18 |
| Analogue Box Cameras | 19 |
| Lenses | 20 |
| Keyboards and Controllers | 21 |
| Monitors | 22 |
| Stand-alone, Modular Access Control | 23-24 |
| Integrated Access Control, Video and Intrusion | 25 |
| Managed Access Control | 26 |
| Proximity Readers | 27 |
| Smart Card Readers | 28 |
| Smart Card Credentials | 29 |
| Mifare Smart Card Readers and Credentials | 30 |
| Visitor Management | 31 |

NOTE: Honeywell reserves the right, without notification, to make changes in product design or specifications.

At the time of publication, some products within this brochure are yet to be launched. Please contact your Honeywell representative to check availability and functionality before quoting or installing any equipment listed.

Have you seen these?

IP Cameras

Open Your World to the Power of IP

Honeywell's IP cameras offer superb image quality, low bandwidth and less storage requirements at a cost that represents true value.

From indoor mini-domes to PTZ domes ranging from 540 TVL to high definition to megapixel resolutions, we have a broad spectrum of cameras to fit any application.

- Indoor Mini Domes
 - 720p high definition H.264 and MPEG-4
- Outdoor Mini Domes
 - 720p high definition H.264 and MPEG-4, 540 TVL
- Box Cameras
 - 5 and 3.1 megapixel 720p high definition H.264, 540 TVL
- PTZs
 - 540/530/470 TVL in indoor, in-ceiling, outdoor and rugged housings

See Pages 6-7



NetAXS-123

Stand-alone, Modular Access Control Starting at 1,2 or 3 Doors

- Quick and easy installation
 - no dedicated PC/software required
 - no network needed
 - mount at the door solution
- Modular
 - add 1 door at a time
- Low cost of ownership
- Convenient and easy operation
- Available in a compact plastic (POE) or metal enclosure (built-in power supply for panel and locks)



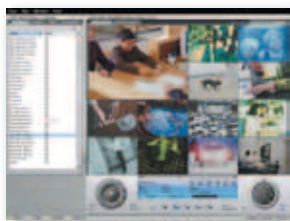
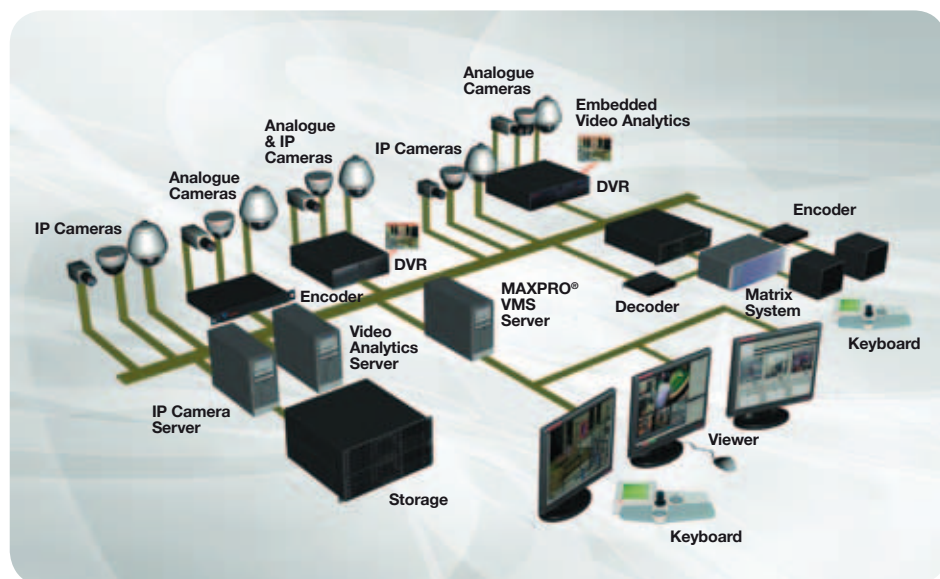
Ask for a demonstration today

Access Control has never been this easy!
See Page 23

IP Systems

The Honeywell IP security surveillance portfolio allows integration of a broader range of technology – including video analytics, megapixel cameras and a new video management platform – into existing analogue systems. By integrating the latest in digital and IP technology with traditional analogue components, end users can better control operational costs and maximise existing investments in surveillance equipment.

Honeywell IP Systems at a glance



Software (see page 8)

MAXPRO® VMS
Active Alert Intelligent Video Analytics
IDM (Integrated Data Manager)



Recording Hardware (see page 10)

Hybrid DVR: Fusion IV DVR
Box NVR: Fusion IV NVR
MAXPRO® NVR SE

The Honeywell Open Technology Alliance forges strategic relationships with third-party manufacturers to give you ultimate flexibility when designing IP security systems. This allows you to capitalise on our open architecture and use the third-party equipment you already have in place to minimise costs and transition to IP with confidence and ease.



IP Cameras (see pages 6-7)

EQUIP® Series
ACUIX™ IP PTZ Cameras
HCX Megapixel Series



Matrix Switching Systems (contact us for more information)

MAXPRO®-Net
VideoBloX
VideoBloX Lite
MaxCom Gold



Video Encoder

HNVE1



Keyboards (see page 21)

UltraKey Plus HJK7000
UltraKey Lite® HJC5000
UltraKey Touch HJC4000
HEGS5300

IP Cameras

Honeywell's IP cameras provide high resolution protection that is infinitely expandable over an existing network. Our HD cameras provides high definition picture quality at an efficient bandwidth, which can result in significant storage savings.

IP Box Cameras



HCD5MIHX (Contact us for availability)

720p • H.264 compression • True Day/Night

HCX3W

3.1 Megapixel • Colour • 4.0-10 mm lens

HCX5DW2

5 Megapixel • True Day/Night • 4.5-13 mm lens

Supported
by Milestone
XProtect™

IP Mini Domes



HD Picture
Quality, Efficient
Bandwidth

HD3MDIPX

Indoor • 720p • MPEG-4 and MJPEG compression • 1280 x 720, 800 x 450, 640 x 360, 320 x 180 resolutions • True Day/Night • 3.3 – 12 mm VFAI MP lens • 24 VAC or PoE IEEE 802.3af

HD3MDIHX (Contact us for availability)

Indoor • 720p • H.264 and MJPEG compression • 1280 x 720, 800 x 450, 640 x 360, 320 x 180 resolutions • True Day/Night • 3.3 – 12 mm VFAI MP lens • 24 VAC or PoE IEEE 802.3af

HD4MDIPX

Outdoor • 720p • MPEG-4 and MJPEG compression • 1280 x 720, 800 x 450, 640 x 360, 320 x 180 resolutions • True Day/Night • 3.3 – 12 mm VFAI MP lens • 24 VAC or PoE IEEE 802.3af

HD4MDIHX (Contact us for availability)

Outdoor • 720p • H.264 and MJPEG compression • 1280 x 720, 800 x 450, 640 x 360, 320 x 180 resolutions • True Day/Night • 3.3 – 12 mm VFAI MP lens • 24 VAC or PoE IEEE 802.3af

All our IP cameras are supported by a web browser and a variety of video management and recording systems, including Honeywell's MAXPRO® VMS, MAXPRO® NVR SE and Fusion IV DVR which allows users to migrate their analogue systems to IP at their own pace.

ACUIX™ IP PTZ Domes



HDXA

18X Colour • 470 TVL • 4.1-73.8 mm lens • Up to 25fps • Up to 64 presets • 4 housing options



HDXF

26X True Day/Night • 530 TVL • 3.5-91 mm lens • Up to 25fps • Up to 64 presets • 128X WDR • Moveable IR filter • 4 housing options



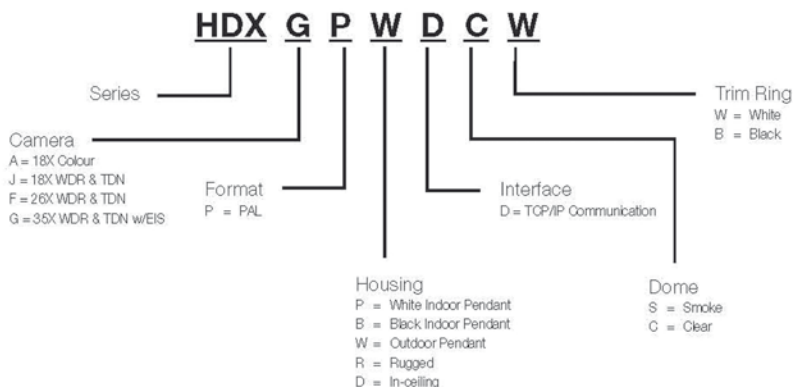
HDXJ

18X True Day/Night • 530 TVL • 4.1-73.8 mm lens • Up to 25fps • Up to 64 presets • 128X WDR • Moveable IR filter • 4 housing options



HDXG

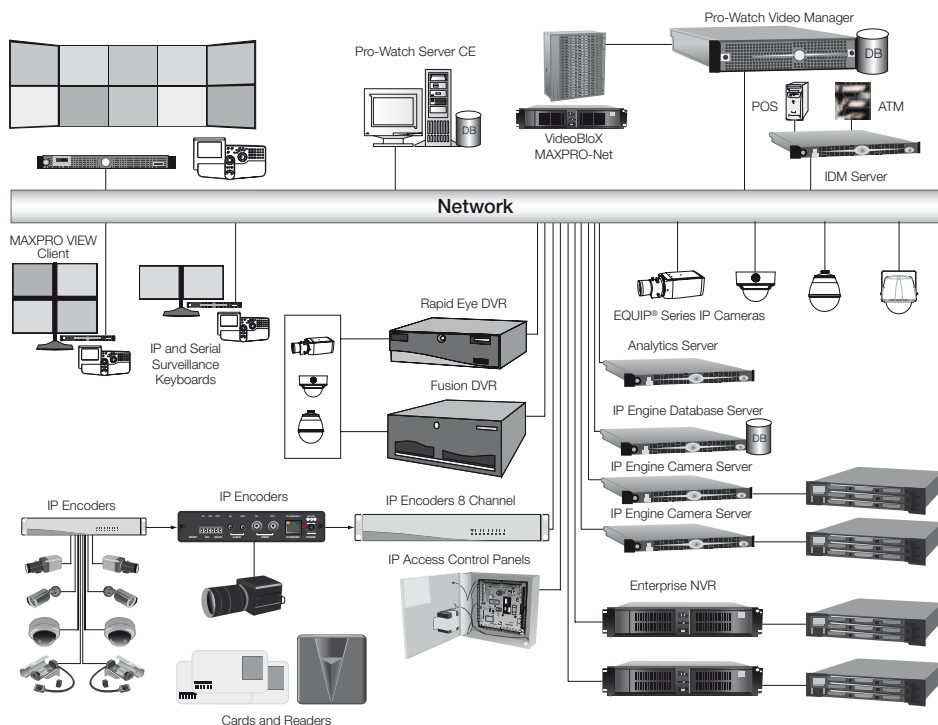
35X True Day/Night • 540 TVL • 3.4-119 mm lens • Up to 25fps • Up to 64 presets • 128X WDR • Electronic image stabilisation • Moveable IR filter • 4 housing options



Video Management System

MAXPRO® VMS controls multiple sources of video subsystems to enhance the user's video surveillance experience with maximum efficiency and minimum effort. Using an open architecture and IP-based systems, MAXPRO® VMS leverages an existing video infrastructure to collect, manage and present video in a clear and concise manner.

MAXPRO® VMS System Diagram



Note: MAXPRO® VMS is available only to approved, trained installers.

MAXPRO® VMS – Single Command and Control Interface



Integrated Video and Security Management System MAXPRO® VMS and Pro-Watch®

The integration of MAXPRO® VMS and Pro-Watch® affords superior access control with alarm monitoring and video capabilities.



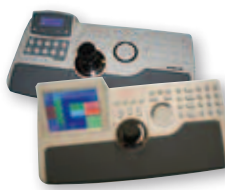
IP Network Solutions EQUIP® and Megapixel Series

For a total video management experience, Honeywell's MAXPRO® VMS and IP-ready products such as PTZ, mini-domes, box cameras and megapixels integrate with third party DVRs and NVRs – facilitating the migration to IP.



Next Generation Vision MAXPRO® VIEW Client Software

MAXPRO® VIEW is the feature-rich next generation viewer that works with MAXPRO® VMS to help operators intuitively perform video operations, thereby increasing personal productivity and responsiveness.



Unified Command & Control UltraKey IP Controllers

MAXPRO® VMS gives users a unified end-to-end solution to interface devices ranging from NVRs and DVRs to PTZ controllers, matrix switchers and joystick controllers.



World Class, Scalable NVR

MAXPRO® VMS is scalable for the future as the needs of your customers grow. Enterprise NVR technology is used in some of the world's largest digital video surveillance systems.



Smarter Video, Smarter Decisions Active Alert® Video Analytics

MAXPRO® VMS integrates with our intelligent video analytics suite, Active Alert. The analytics engine uses advanced search tools for manned and unmanned video surveillance systems that removes the strain of surveillance and the burden of data overload from operators.

DVRs and IP Recording

The Fusion IV DVR Series bridges the gap between DVRs and NVRs. It is a full-featured hybrid digital recording system that can, search and transmit up to 32 channels of analogue video sources and up to 16 channels of audio.

The Fusion IV NVR Series is ideal for IP video systems requiring a scalable recording and video management platform for an end-to-end digital video surveillance system.

Fusion



Fusion IV DVR

IP hybrid capability up to 16 inputs • Analogue recording up to 32 channels • 100, 200, 400 IPS (PAL) • DVD-RW • Up to 8 TB • Embedded Data Analytics (POS) • Remote management software included

Fusion IV NVR

IP recording up to 16 channels • 200, 400, 800 IPS (PAL) • DVD-RW • Up to 12 TB • Embedded Data Analytics (POS) • Remote management software included

Ordering

Fusion IV DVR

HF4

32

40

R

4T0

A

Accessories

A = Factory Installed Accessories

N = No Accessories

Video Display/Compression

R = Selectable Compression/MJPEG, MPEG4, H.264

H = Hardware Compression / H.264 D1/4CIF

Internal Storage

500 = 500 GB Storage

1T0 = 1 TB Storage

2T0 = 2 TB Storage

4T0 = 4 TB Storage

8T0 = 8 TB Storage

Number of Channels

8 = 8 Channels

16 = 16 Channels

32 = 32 Channels**

Capture Rating (@ CIF resolution)

PAL

10 = 100 ips*

20 = 200 ips*

40 = 400 ips***

Model Number

HF4 = Fusion IV DVR

* 100 ips only available in 16 CH

** 32 CH only available in R series

*** 400 ips only available in 16 and 32 CH

Note: Honeywell reserves the right, without notification, to make changes in product design or specifications.

Ordering

Fusion IV NVR

HF4

N

08

24

B

500

A

Accessories

A = Factory Installed Accessories

N = No Accessories

Package

B = Base

P = Plus

(includes Hardware Performance Package)

Internal Storage

500 = 500 GB Storage

1T0 = 1 TB Storage

2T0 = 2 TB Storage

4T0 = 4 TB Storage

6T0 = 6 TB Storage

8T0 = 8 TB Storage

12T0 = 12 TB Storage

Frame Rate

24 = 200

48 = 400

Number of Channels

08 = 8 CH

16 = 16 CH

NVR

N = NVR

Model Number

HF4 = Fusion IV NVR

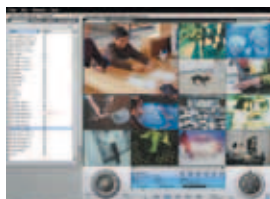
Note: Honeywell reserves the right, without notification, to make changes in product design or specifications.

MAXPRO® NVR SE is an easy to install, configure and operate NVR solution for small to mid-scale systems. **MAXPRO® NVR SE** supports simultaneous recording, search and system management for up to 32 IP and HD cameras. As a system grows, multiple NVR units can be combined into a full **MAXPRO® VMS** system to support a large-scale system deployment.



MAXPRO® NVR SE

Available pre-installed on hardware (software only version available soon) • IP recording up to 32 cameras • Honeywell IP camera and PSIA compatible support • Up to 16TB storage • User interface mimics MAXPRO VMS • Migration to larger MAXPRO VMS systems possible



HE32SWL2 Enterprise NVR Software

Software and DVS Key for 32 encoder channels and 4 IP cameras • Includes 2 TB ring buffer license • Pentaplex operation: "live" viewing, 'playback' viewing, recording, video and audio recording and transmission • Powerful scripting language for creating automatic event response and routine actions • Requires Server - contact us for more information

Note: Enterprise NVR is available only to approved, trained installers.

Intelligent Video Analytics

Honeywell's video analytics suite of products enables enhanced security and surveillance solutions by automatically monitoring video for specific people, vehicles, objects, and their associated behaviour within a camera view. Active Alert® from Honeywell is classified by i-LIDS® as a Primary Detection System and Event Based Recording System for sterile zone monitoring applications.

- Smart video motion detection accurately identifies real movement and ignores environmental factors such as rain, snow and changes in lighting
- Compared to traditional pixel-based motion detection, detection rates increase and false alarm rates are drastically reduced
- Delivers analytics alarms to MAXPRO® VMS where they can be reviewed and trigger advanced alarm handling using the rule engine



Also Works In
Central Station
Applications

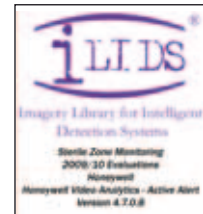
Applications



Perimeter Protection



Restricted Area



Loitering



Customer Behaviour



People Counting

DVRs - Embedded

Feature-rich units that provide impressive storage capacity; supreme picture quality and superior search capabilities. Suitable for all types of security applications, these embedded DVRs can be accessed over a digital network to offer customers the flexibility they need.

NEW



HREP

H.264 Compression • 4, 8 or 16 Channel Up to 200 ips (PAL)
• Up to 2TB Storage • Remote Software • 2 USB ports • PTZ Dome Control available

Free
'Remote-View'
App Available



HRDP4/8/16-D

H.264 Compression • 4, 8 or 16 Channel • Up to 200 ips (PAL)
• Up to 4 TB Storage • Remote Software • Built-in DVD-RW • 2 USB ports • PTZ Dome Control available • FVMS Compatible



HRDPX16-D

MPEG-4 Compression • 16 Channel • Up to 400 ips (PAL)
• Up to 2 TB Storage • Remote Software • Built-in DVD-RW • Integrates with FVMS, WIN-PAK and third party central station software



HRSD40F

4 Channel • Up to 100 ips (PAL)
• 250 GB Storage • Multi-site RASplus Software • POS, ATM interface supports text insertion
• USB port for clip copy



HRSD8/16-D

8 or 16 Channel • Up to 100 ips (PAL) • Up to 1500 GB Storage
• Multi-site RASplus Software • POS, ATM interface supports text insertion • Built-in DVD-RW



HRXD9/16-D

9 or 16 Channel • Up to 200 ips (PAL) • Up to 750 GB Storage • RASplus Software • POS, ATM interface supports text insertion • Built-in DVD-RW • WebGuard remote access via PC with Microsoft® Internet Explorer web browser

Analogue PTZ Cameras

A wide range of leading-edge PTZ domes that offer world-class performance and seamless system integration.

ACUIX™: The ideal PTZ choice for customers with the most demanding security needs. ACUIX™ is a feature-rich PTZ loaded with the latest value-added technology for 24/7 active surveillance operations.

ACUIX™ ES: Perfect for customers with applications that require standard PTZ features. ACUIX™ ES has the most popular functionality without the added expense of more advanced PTZ domes.

ACUIX™



ACUIX™
In-Ceiling



ACUIX™
Indoor Pendant



ACUIX™
Outdoor Pendant



ACUIX™
Rugged Housing

ACUIX™ ES



ACUIX™ ES
In-Ceiling



ACUIX™ ES
Surface Mount

Adapter
Available for
Orbiter Indoor
Domes



ACUIX™ ES
Indoor Pendant



ACUIX™ ES
Outdoor Pendant

Performance Series



HDTX

10X TDN • Indoor
• 3.8-38mm lens F1.8 • 470
TVL (Colour) • In-Ceiling, Ceiling,
Surface, Wall Mount • Up to
127 user-defined presets

Coming Soon
Ask For
Availability

Brackets for HDTX

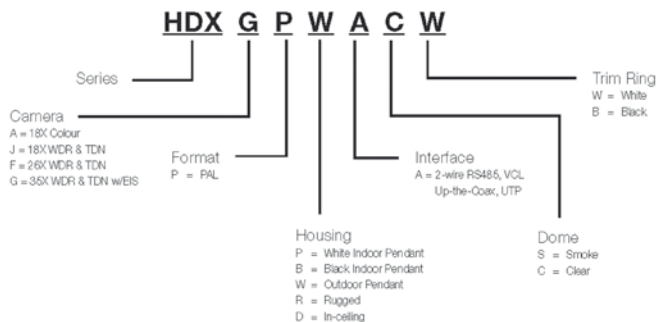
Indoor Wall Mount Bracket:
HDTW
Indoor Ceiling Mount Bracket:
HDTC

ACUIX™ References

HOW TO ORDER

Example:

HDXGPWACW =
35X WDR & TDN
w/EIS/PAL/Outdoor
Pendant/Analogue/
Clear/White



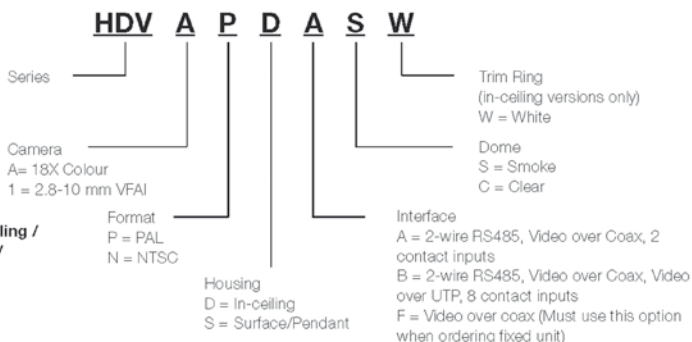
ACUIX™ ES Indoor References

Example (PTZ)

HDVAPDSW =
18X Colour / PAL / In-ceiling /
RS485 2 Contact Inputs /
Smoked / White trim

Example (Fixed)

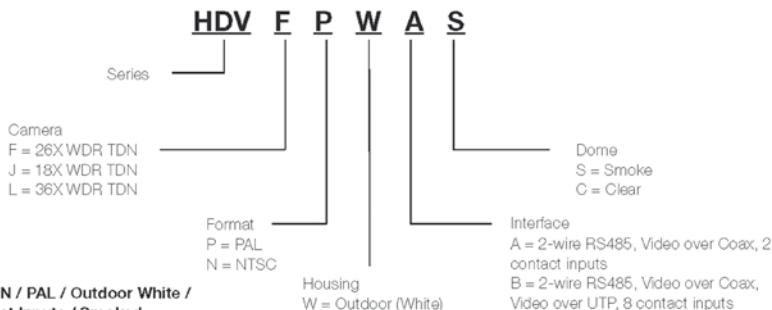
HDV1PDFSW =
2.8-10 mm VFAI Fixed / PAL / In-ceiling /
Video over coax / Smoked / White trim



ACUIX™ ES Outdoor References

Example

HDVFPWAS =
26X WDR & TDN / PAL / Outdoor White /
RS485 2 Contact Inputs / Smoked



Analogue Indoor Mini Domes

Indoor mini-domes are all-inclusive units, combining camera, lens, and housing into a single package that is easy to install and ideal for retail and commercial applications. Our indoor mini-domes are available in many different sizes with varying lens options and other configurations.



HD3CHSX

3" • 540TVL • Colour • White Housing • 2.8-10 mm lens • 12 VDC/24 VAC

HD3DX

3" • 540TVL • True Day/Night • White Housing • 2.8-10 mm lens • 12 VDC/24 VAC

HD3UX

3" • Ultra Wide Dynamic • 540TVL • White Housing • 2.8-10.5 mm lens • 12 VDC/24 VAC

Power Supplies

HD3 Series: CT5002

Performance Series: PSUPER12VDC

HD4 Series: HPTV2401

Wall Brackets

HD3 Series: HD3-MK1

HD4 Series: HD4-WK



HD40X – Performance Series

3" • 380 TVL • Colour • 3.8 mm lens • 12 VDC Only



HD60X – Performance Series

3" • 380 TVL • Day/Night • 24 IR LEDs • 4 mm lens • 12 VDC Only



HD61X – Performance Series

3" • 380 TVL • Day/Night • OSD • 20 IR LEDs • 4-9 mm lens • 12 VDC Only

Analogue Vandal Resistant Mini Domes

Vandal resistant, indoor/outdoor mini-dome cameras offering an excellent balance of rugged durability and aesthetic appeal. With many different mounting and profile options, there is a Honeywell indoor/outdoor mini-dome to suit nearly every surveillance application.



HD4CHX

Colour • Super High Resolution
• 2.8-10 mm lens • 12 VDC/
24 VAC



HD4D3X

DNR • True Day/Night • Super
High Resolution • 3.3-12 mm
lens • 12 VDC/24 VAC



HD4D9X

DNR • True Day/Night • Super
High Resolution • 9-22 mm lens
• 12 VDC/24 VAC



HD4DIRX

DNR • True Day/Night • Super
High Resolution • 18 IR LEDs •
3.3-12 mm lens • 12 VDC/
24 VAC



HD4UX

Ultra Wide Dynamic • True Day/
Night • Super High Resolution •
2.8-10 mm lens • 12 VDC/
24 VAC



**HD50X – Performance
Series**

Colour • 530TVL • 3.8 mm lens
• 12 VDC Only



**HD51X – Performance
Series**

Colour • 550TVL • 4-9 mm lens
• 12 VDC Only



**HD70X – Performance
Series**

Day/Night • 550TVL • 24 IR
LEDs • 4 mm lens • 12 VDC
Only



**HD73X – Performance
Series**

True Day/Night • 530TVL • OSD
• 20 IR LEDs • 3.8-9.5 mm lens
• 12 VDC Only

Performance
Series - Perfect
Entry Level
Solution

Analogue Bullet Cameras

Discreet and stylish high-quality bullet-style cameras are designed with aesthetics, flexibility and ease of installation in mind. When ambient light drops below a certain point, a mechanical IR cut filter within the camera switches and the camera changes from colour to black and white enabling colour pictures to be captured by day, and clear black and white images at night. Our industry leading product offering includes models with polished aluminium enclosures, sun hoods and integrated infrared illuminators.



HCD92534X

True Day/Night • 530TVL • DNR • 49 IR LEDs • 2.8-10 mm lens



HCD95534X

True Day/Night • 530TVL • DNR • 26 IR LEDs • 5-50 mm lens



HB73X – Performance Series

True Day/Night • 550TVL • DNR • 18 IR LEDs • 3.8-9.5 mm lens

HB72SX – Performance Series

Day/Night • 530TVL • 12 IR LEDs • 4.3 mm lens

HB70X – Performance Series

Day/Night • 380TVL • 12 IR LEDs • 4.3 mm lens

Power Supplies

HCD92534X: CT5002

HCD95534X: HPTV2402DWP

Performance Series

PSUPER12VDC

Analogue Box Cameras

A comprehensive range of box cameras that offers the flexibility and versatility required by the most demanding customer. Our box cameras come in a variety of configurations and with a multitude of options, including Ultra Wide Dynamic, True Day/Night, high resolution colour and black and white. Incredibly versatile, each can be mounted in various ways with one of several lens options.



HCD544PVX

True Day/Night • 540TVL • Colour/Black and White • 12 VDC/24 VAC



HCS544X

Software Day/Night • 540TVL • Colour/Black and White • 12 VDC/24 VAC

HCD545X

True Day/Night • 540TVL • Colour/Black and White • 230 VAC

HCS545X

Software Day/Night • 540TVL • Colour/Black and White • 230 VAC

HCU484X

Ultra Wide Dynamic • Software Day/Night • 480TVL • Colour



HCC334LX

330TVL • Colour

HCM584LX

580TVL • Colour/Black and White



AVH Series

Weatherproof housing • Compatible with all Honeywell box camera and lens options • Wall mount brackets available

Lenses

Honeywell offers world-class lenses for both indoor and outdoor performance. These lenses provide customers with the ability to see high contrast, clear and detailed pictures of subjects in daylight, low light and near infrared light. They are designed with sophisticated optics for superior light gathering and the ability to work seamlessly with our cameras.



HLD28V8F95L

Software Day/Night • Colour • B/W • 2.8-8.0 mm
Vari-focal Auto Iris lens



HLD27V13DNL

True Day/Night • 2.7-13.5 mm lens



HLD5V50F13L

Software Day/Night • Colour • B/W • 5.0-50 mm
Vari-focal Auto Iris lens

Keyboards and Controllers

Keyboards are a critical component of the matrix switching system, enabling better control, ease-of-use, and access to all the functionality of the matrix switch systems. CCTV peripheral control is managed by intelligent keyboard controllers that interface directly to PTZ domes, DVRs or multiplexers.



UltraKey Plus HJK7000

Programmable colour touch screen display

- Keyboard with multiple connectivity options (RS232/422/485 and TCP/IP)
- Programmable 'Touch Wheel' for DVR/NVR control
- Web browser for easy upgrading and configuring
- MAXPRO®-Net and VideoBloX compatible



UltraKey Lite® HJC5000

Keyboard with multiple connectivity options

- (RS232/422/485 and TCP/IP)
- Web browser for easy upgrading and configuring
- MAXPRO®-Net and VideoBloX compatible



HEGS5300

Keyboard with intelligent, user-friendly approach to the MAXPRO®-Net video management system

- Allows for a customised user interface based on the demands of the installation and application
- 10 user programmable "Macro" selections available
- MAXPRO®-Net compatible



Coming Soon
Ask For
Availability

UltraKey Touch HJC4000

3-axis joystick controller; 1x RS232, 1x RS-422 1x TCP/IP • Compatible with Honeywell HRDP, HRXD, HRSD and Fusion IV DVR & NVR units (depending on connection type used) • Direct control of Honeywell HDX, HD6 and Orbiter PTZ domes using Diamond, VCL and Intellibus, Pelco P & D • Quick and simple installation • Web browser for easy upgrading/configuring

Monitors

The e-Series and L-Series monitors feature high grade LCD panels with high brightness, high contrast and fast response times that are designed specifically for the video security and surveillance industry.



HMLCD19e2X

19" Colour LCD Monitor • High resolution: SXGA 1280 x 1024 • High brightness, 300 cd/m² • High contrast ratio, 1000:1 • Fast response time, <5 ms • 2 built-in speakers • Five language OSD display



HMLCD19LX

19" Colour LCD Monitor • High resolution: SXGA 1280 x 1024 • High brightness, 300 cd/m² • High contrast ratio, 500:1 • Fast response time, <5 ms • 2 built-in speakers

HMLCD17LX

17" Colour LCD Monitor • High resolution: SXGA 1280 x 1024 • High brightness, 300 cd/m² • High contrast ratio, 500:1 • Fast response time, <5 ms • 2 built-in speakers

Stand-alone, Modular Access Control (1,2,3 Doors)

NetAXS-123 is a fully featured, compact stand-alone access control solution that can be easily installed and managed via a web browser without the need to be connected to a network or the internet. Each NetAXS-123 panel can be configured for one, two or three doors. 2 readers per door can be connected for in and out reading.



Access Control
Has Never Been
This Easy

* Requires external power when used in compact plastic enclosure

** 2-door add-on board is not compatible with compact plastic enclosure

1 Door Solution

NX1P

One door, compact (plastic) enclosure • Power over Ethernet (PoE or PoE+) or external 12 VDC power supply required • Dimensions: 19.5 x 19.5 x 5.8 cm

NX1MPS

One door, standard (metal) enclosure with tamper switch and terminal block • Includes 12 VDC / 4A power supply and 12V, 7 AH battery to provide power to the panel and to 12V locks • Dimensions: 35.6 x 30.5 x 12.7 cm

3 Door Solution

NX3MPS

Three door, standard (metal) enclosure with tamper switch and terminal block • Includes 12 VDC / 4A power supply and 12V, 7 AH battery to provide power to the panel and to 12V locks • Dimensions: 35.6 x 30.5 x 12.7 cm

2 Door Solution

NX2P

Two door, compact (plastic) enclosure • External 12 VDC / 3A power supply required • Dimensions: 19.5 x 19.5 x 5.8 cm

NX2MPS

Two door, standard (metal) enclosure with tamper switch and terminal block • Includes 12 VDC / 4A power supply and 12V, 7 AH battery to provide power to the panel and to 12V locks • Dimensions: 35.6 x 30.5 x 12.7 cm

Add-on Boards (For 1 and 2 door expansions)

NXD1*

One door add-on board (Adds 1 door to your existing 1-door system = 2 doors)

NXD2**

Two door add-on board (Adds 2 doors to your existing 1-door system = 3 doors)

Stand-alone, Modular Access Control (4 Doors)

The Honeywell NetAXS™ family also includes a 4 door controller version. It seamlessly integrates with Honeywell's WIN-PAK™ software to enable more sophisticated installations.



Save Time and
Money – Easy
to Install

NX4S1E

NetAXS 4 door access controller in standard enclosure • Built-in 230V transformer • Four surge suppressors • Back-up battery

NX4UPG2T4

Legacy NetAXS NX4S2E to NX4S1E upgrade

Integrated Access Control, Video and Intrusion

WIN-PAK™ SE/PE with Galaxy integration brings together Honeywell's WIN-PAK™ access control system, Galaxy intrusion control panels, Fusion and HRDP 'Performance Series' DVRs.

The ability to integrate these technologies from one manufacturer now makes it easier for major enhancements to be made to existing systems or to significantly improve the operation of new security systems.



Access Control Features

- Fully featured access control system, unrestricted license to control up to 30,000 doors
- Complement WIN-PAK™ with PRO2200, NetAXS-4, NetAXS-123 and N-1000 Access Control hardware

Key Integration Benefits

- Save time and money by managing three separate systems with one easy-to-use software interface
- Improve the level of security by eliminating user code sharing. Increase security by using a unique card to disarm a system and grant access at the door
- WIN-PAK® SE/PE software interface allows users to retrieve and play back alarms associated with intrusion and access control
- Automated reporting allows users to send up-to-date reports on intrusion and access events hourly, daily, weekly or monthly
- Reduce employee down-time by only requiring training on one system
- Align WIN-PAK® SE/PE with Galaxy integration with existing system needs for an added level of security
- Expand to meet current and future needs. Start with access and add video or intrusion later as requirements change

WIN-PAK® Standard Edition (SE)

- Access Control Software
- Software for one or five concurrent users

WIN-PAK® Professional Edition (PE)

- Access Control Software
- Unrestricted number of concurrent users
 - Up to 50 accounts for a multi-tenant application

Managed Access Control

WIN-PAK® PRO Central Station access control provides a cost effective, easy-to-manage security solution for businesses, and recurring revenue stream opportunities for security installers.



**Increase
Recurring Revenue
Streams**

Key Benefits

- Reduce bid costs, win more business
- Reduce installation training and service costs
- Provide value-added services that keep customers longer
- Help prevent competition from targeting your customers
- End users can manage their own system via a web browser

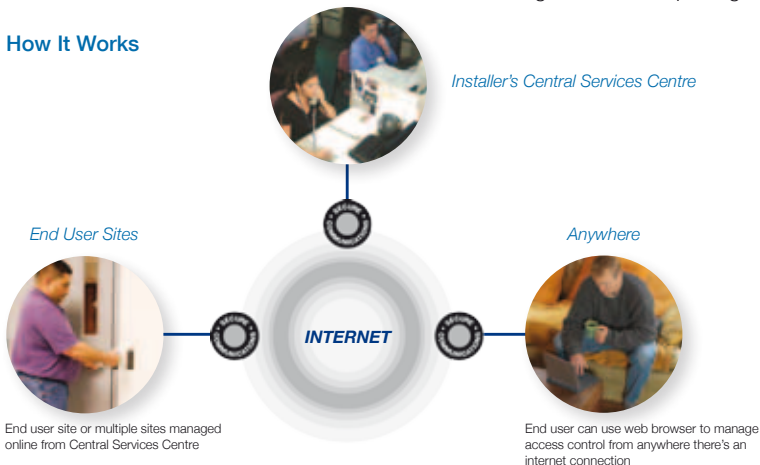
WIN-PAK® PRO Central Station

Managed Access Control Software for
Multiple End User Installations

WIN-PAK® PRO Central Station Web Browser

Web Browser Add-on for End User's
Control, Management and Reporting

How It Works



Proximity Readers

OmniProx™ is a range of 125 kHz HID® compatible proximity readers. All OmniProx readers (except the OP90) include three bezels: black, charcoal grey and ivory and are potted for both indoor and outdoor applications. For locations that require a proximity reader able to withstand vandal-prone environments, the OP90 vandal resistant readers come standard in a zinc die-cast metal housing. All readers have Wiegand output for use with Honeywell access panels and intrusion Door control modules.

HID-
Compatible
125 kHz
Readers



OP10HONR

OmniProx Mini Mount Reader

- 5.1-7.6 cm read range
- Optical tamper, host LED
- Internal buzzer • Honeywell logo



OP45HONR

OmniProx Reader • Fits UK

- single-gang electrical box
- 8.9 cm read range • Optical tamper, host LED
- Internal buzzer • Honeywell logo



OP30HONR

OmniProx Mullion Mount Reader

- 10.2 cm read range • Optical tamper, host LED
- Internal buzzer • Honeywell logo

OP10GENR

OmniProx Mini Mount Reader •

- 5.1-7.6 cm read range • Optical tamper, host LED
- Internal buzzer • No logo

OP45GENR

OmniProx Reader • Fits UK

- single-gang electrical box
- 8.9 cm read range • Optical tamper, host LED
- Internal buzzer • No logo

OP30GENR

OmniProx Mullion Mount Reader

- 10.2 cm read range • Optical tamper, host LED
- Internal buzzer • No logo



OP90HONR

OmniProx Reader • Vandal resistant • Zinc die-cast metal

- 5.1 cm read range • HID card compatible • Optical tamper, host LED
- Internal buzzer • Honeywell logo

Credentials



PVC-H-4

HID PVC Proximity Card® (34-Bit) • Credit card form factor

- Sequentially numbered where encoded number equals printed number
- Allows a video photo ID to be printed directly on the card surface
- Suitable with all PVC printers



PX-KEY-H

HID Proximity Card Key Fob (34-Bit) • Sequentially numbered where encoded number equals printed number • Read ranges may be reduced by 50% when using the fob versus a card

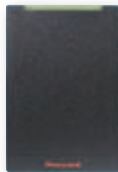
Smart Card Readers

OmniClass™ from Honeywell is a range of 13.56 MHz contactless secure smart card readers that offers superb reliability, consistent read range and ease of installation. They are available in several sizes and each OmniClass reader incorporates smart card technology allowing the user to support biometric profiles and multiple applications on each card simultaneously.



OM30BHONCS

OmniClass mullion smart card reader • Black bezel • 18" pigtail wire connection • Compatible with OmniClass, iCLASS, and Mifare CSN • Up to 8.9 cm read range



OM40BHONCS

OmniClass mullion smart card reader • Black bezel • 18" pigtail wire connection • Compatible with OmniClass, iCLASS, and Mifare CSN • Up to 12 cm read range



OM45BHONCS

OmniClass smart card reader • Fits UK single-gang electrical box • Black bezel • 18" pigtail wire connection • Compatible with OmniClass, iCLASS, and Mifare CSN • Up to 10.2 cm read range



OM55BHONCS

OmniClass keypad smart card reader • Black bezel • 18" pigtail wire connection • Compatible with OmniClass, iCLASS, and Mifare CSN • Up to 10.2 cm read range



OM70BHONC

OmniClass long-range smart card reader • Black bezel • Compatible with OmniClass, and iCLASS • Up to 45 cm read range

Smart Card Credentials

The cost-effective 2kb OmniClass smart card is ideal for the majority of access control applications and is delivered with a programmed card number printed on the surface. As smart cards can also store data for other applications, (cashless vending), the 16kb OmniClass credentials become suitable for campuses and other facilities where a single card is issued.



OKP0N26

OmniClass 2K2 PVC Card (26-bit)

OKP0N34

OmniClass 2K2 PVC Card (34-bit)

OKP2N26

OmniClass 16K16 PVC Card (26-bit)

OKP2N34

OmniClass 16K16 PVC Card (34-bit)



OKK2N26

OmniClass 16K16 Key Fob (26-bit)

OKK2N34

OmniClass 16K16 Key Fob (34-bit)



OKS2N26

OmniClass 16K16 Sticker (26-bit)

OKS2N34

OmniClass 16K16 Sticker (34-bit)

Special Cards

OKH2N26

OmniClass 16K16 PVC Card plus HID Prox (26-bit)

OKH2N34

OmniClass 16K16 PVC Card plus HID Prox (34-bit)

OKP2M26

OmniClass 16K16 PVC Card (26-bit) with Magnetic Stripe

OKP2M34

OmniClass 16K16 PVC Card (34-bit) with Magnetic Stripe

OKH2M26

OmniClass 16K16 PVC Card plus HID Prox (26-bit) with Magnetic Stripe

OKH2M34

OmniClass 16K16 PVC Card plus HID prox (34-bit) with Magnetic Stripe

Mifare Smart Card Readers

OmniAssure™ readers are based on the Mifare technology reading Mifare Classic credentials, but also the more secure DESFire credentials. The OmniAssure biometric reader provides a fingerprint solution for up to two fingerprints on the same 1k Mifare card as for normal readers. As the fingerprint template is stored on the Mifare card, the enrolment is done once for the whole project on one of the fingerprint readers without using special enrolment software. All readers have Wiegand output for use with Honeywell access panels and intrusion door control modules.



OT30HONBM

OmniAssure smart card mullion-style reader

- Silver bezel • Terminal block connection
- Default credential is Mifare Classic •

Compatible with programmed Mifare Classic cards (OFP1N34) and Mifare CSN • Also available for DESFire credentials

OT35HONBM

As per [OT30HONBM](#) but with additional keypad



OT31HONBM

OmniAssure transition smart card and HID Prox

- technology mullion-style reader • Silver bezel •
- Terminal block connection • Default credential is

Mifare Classic • Compatible with programmed Mifare Classic cards (OFP1N34) and HID Prox cards (PVC-H-4) • Also available for DESFire credentials

OT36HONBM

As per [OT31HONBM](#) but with additional keypad

OT31HONBS

As per [OT31HONBM](#) but for Mifare Card Serial Number (CSN)

OT36HONBS

As per [OT31HONBS](#) but with additional keypad

Mifare Credentials



OFP1N34

1k Mifare classic PVC card (34-Bit) • Credit card form factor • Sequentially numbered where encoded encrypted number equals printed number • Allows a video photo ID to be printed directly on the card surface • Suitable with all PVC printers

OFP1N00

1k Mifare classic PVC card • Credit card form factor • Unprogrammed • Allows a video photo ID to be printed directly on the card surface • Suitable with all PVC printers



OFK1N34

1k Mifare classic Key Fob (34-Bit) • Blue • Sequentially numbered where encoded encrypted number equals printed number • Read ranges may be reduced by 50% when using the fob versus a card

OFK1N00

1k Mifare classic Key Fob • Blue • Unprogrammed • Read ranges may be reduced by 50% when using the fob versus a card

Floor Standing Visitor Management Kiosk

LobbyWorks™ Kiosk is a stylish and robust self-registration station that supports receptionists or security guards when signing visitors in or out of premises. It can enhance any building entrance and help ensure that only the right visitors are allowed into the facility, improve reception area productivity, service to visitors as well as enhance a company's image.



LWMSPTKIOSK

LobbyWorks Kiosk • Black • Integrated 19" touch screen • Speakers • Web cam • Business card scanner • Bar code scanner • PC (LobbyWorks License LWMSPTKIOSK or LWMSPTKIOSKCL are mandatory per kiosk)

Related Software

LWMSSTD

LobbyWorks Standard Edition (networked version)

LWMSPTKIOSK

LobbyWorks Kiosk License
(one license per kiosk; first license)

LWMSPTKIOSKCL

LobbyWorks Kiosk License
(one license per kiosk; additional license)



For additional information,
please visit www.honeywell.com/security/uk

Honeywell Security Group

Aston Fields Road
Whitehouse Industrial Estate
Runcorn
Cheshire
WA7 3DL
Tel: 08448 000 235
www.honeywell.com

HSG-SHOWCASE-02-EN(0111)SB-C
January 2011
© 2011 Honeywell International Inc.

Honeywell